

## 8. Map Production

Along with providing tools to quickly access and display data over an area, MAADgis provides Map production functionality as well. This functionality is in the form of;

- Creating a high quality scaled output of the map window,
- Ability to display a map grid that is updated everytime the user alters the map window,
- And create a legend to add to the scaled output.

### 8.1 Display a Map Grid

MAADgis contains a dynamic map grid generator that creates a grid at a logical spacing within your specified map windows.

The Dynamic map Grid generator generates a grid that is dynamic, that is, if you pan, zoom in or out or resize the map window, the grid automatically redraws and updates itself.

This means that you do not have to re create a map grid every time a map window is altered, or save lots and lots of grid files.



### 8.1.1 Map options and settings

*Description ...*

This function is used to define the

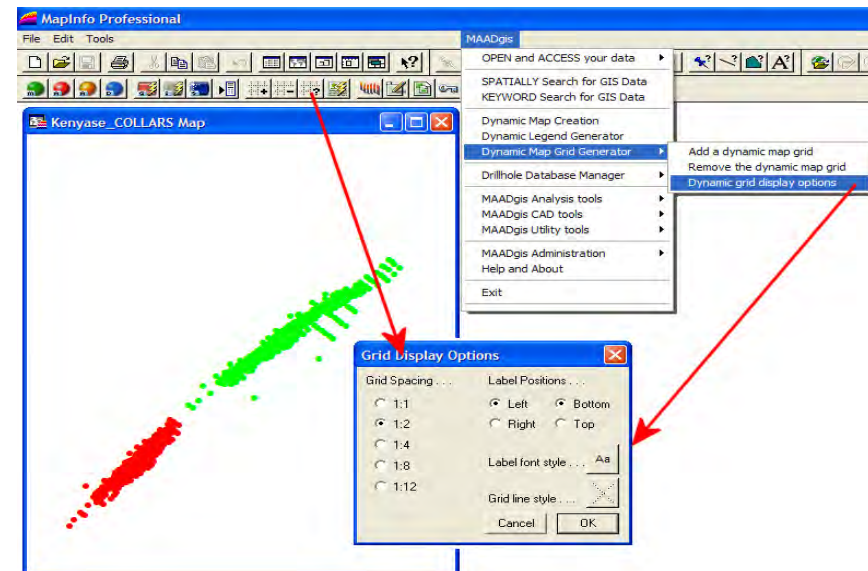
1. grid spacing (in a ratio formulae of map width vs. map height to increase or decrease the distance between grid lines),
2. the label positioning of the X and Y coordinates,
3. Label font style
4. The style of the grid lines

*Accessible from ...*

*Dropdown menu*

**MAADgis >> Dynamic Map Grid Generator >> Dynamic grid display options.**

*Toolbar button*



## 8.1.2 Add a Dynamic Map Grid

### *Description ...*

The method of placing a grid onto a map window has never been easier using this function.

With the Dynamic map Grid generator, when you pan, zoom in or out or re-size the map window, the grid automatically redraws itself. This means that you do not have to re create a map grid every time a map window is altered, or save lots and lots of unused grid files.

### *Accessible from ...*

#### *dropdown menu*

Dynamic Map Grid Generator >> Add a dynamic map grid

#### *toolbar button*



#### *short cut menu*

right mouse click on map window

### *How to Use ...*

- 1.** Add a grid. A map window must be open for this program to work..
- 2.** The Dynamic map Grid generator can be accessed from 3 locations;
  - a) From within the MAADgis drop down menu on the MapInfo menu bar,
  - b) The toll button on the MAADgis toolbar,
  - c) By right mouse clicking from within the map window (I find this the easiest).
- 3.** Select Dynamic map Grid generator from any one of these methods of adding a grid. The grid is drawn in whatever projection the map window is in.

## 8.1.3 Remove a Dynamic Map Grid

### *Description ...*

There may be times when the grid needs to be removed or turned off. From within the same menu options as is for adding a grid, the option of Remove the Dynamic Map Grid can be found. Simply select this option and the grid will be removed.

### *Accessible from ...*

#### *dropdown menu*

Dynamic Map Grid Generator >> Remove the dynamic map grid

#### *toolbar button*



#### *short cut menu*

right mouse click on map window

### *Facts to note:*

*Only 1 grid per map window is available.*

*Grid is generated for the base projection of the window*

*Grid is saved to you're My Documents directory on your PC.*

*The more or detailed layers within the map window, the longer it will take for the map window to redraw every time you pan / zoom in or out.*

*This is a result from the grid having to redraw itself everytime, where the grid is acting as a separate MapInfo layer.*