



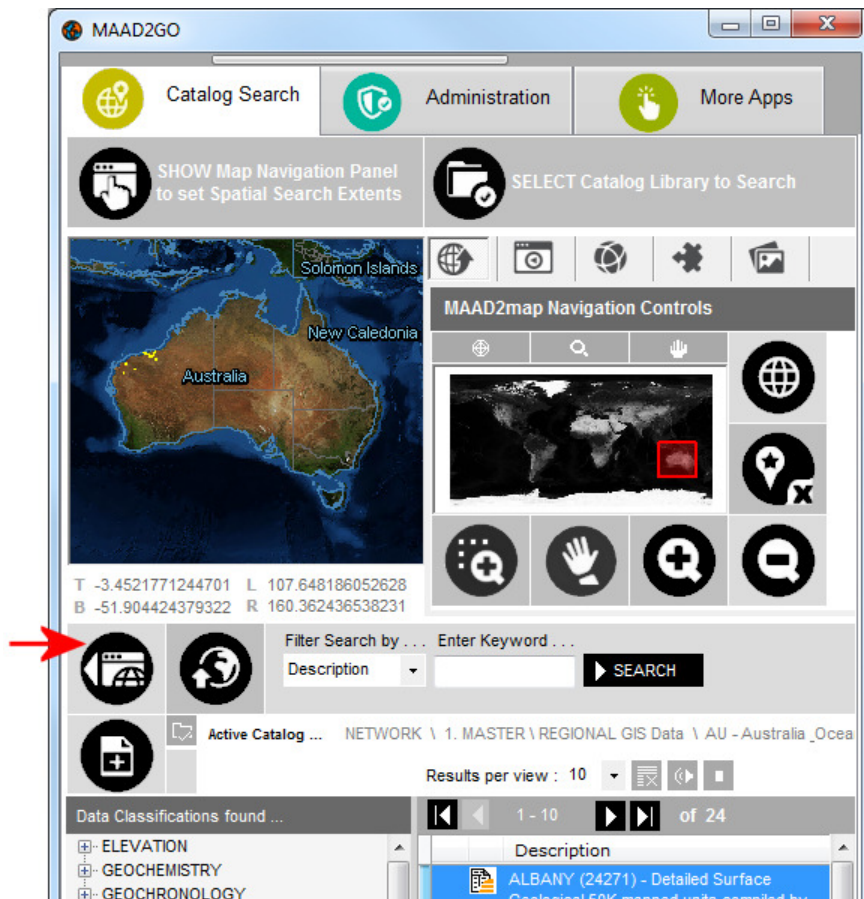


KB5001: How to Display (Show) or Hide the GIS Map Viewer

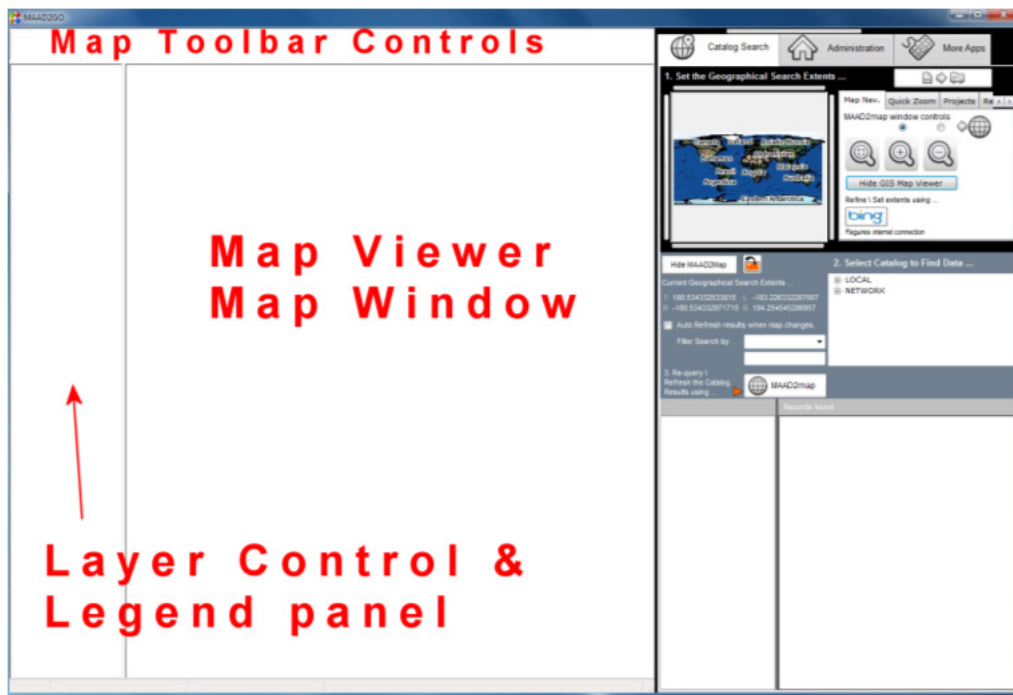
This document outlines the process to Display (Show) and Hide the GIS Map Viewer.

		Button to Show the GIS Viewer
		Buttn to Hide the GIS Viewer

1. From the Catalog Search tab, select the button to Show GIS Map Viewer.



- The GIS Map Viewer will initially expand to display the full width of the computer screen. The GIS Map Viewer is broken up into 4 distinct areas – the Map Window, Layer Control, Map Toolbar Controls and the Map Status Display (along the bottom of the viewer area).



- To Close the GIS Viewer, select the 'HIDE GIS Viewer' button.

