

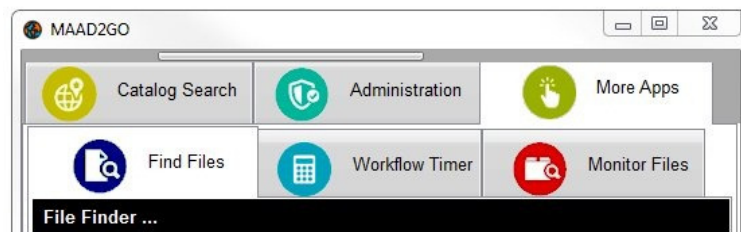
## KB4004: Match entries stored within Catalog Library(s) with files found in folders.

*This document includes information on how to match catalog library(s) content to files found within directories or folders after using the File Finder functionality.*

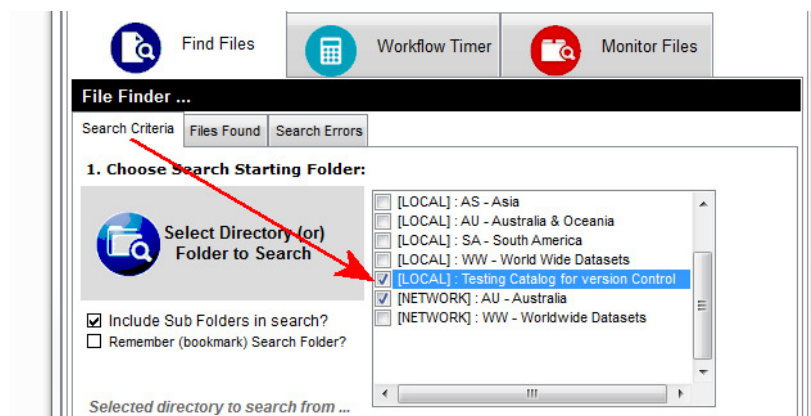
*This document explains the process once a search for files has been completed using the "Find Files" application – refer to the support document titled "KB4003: How to use and information about the 'File Finder' Application" for more information.*

*This functionality was added in version 4.1.0.*

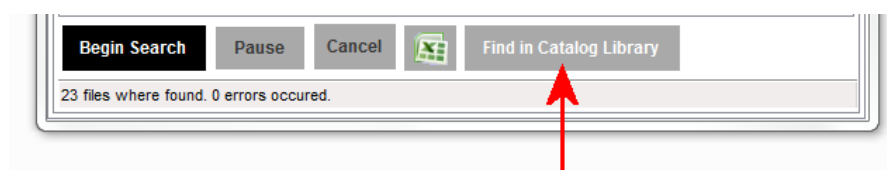
1. To use this function, navigate to the **More Apps** tab option, and select the **Find Files** tab and execute a folder search as outlined within the support document - "KB4003: How to use and information about the 'File Finder' Application" .



2. Usually after a search has been completed, the **Files Found** tab is the active tab displaying the results for the files found. Navigate to the **Search Criteria** tab and select the required catalog libraries to find the matching results with entries within the selected library(s).

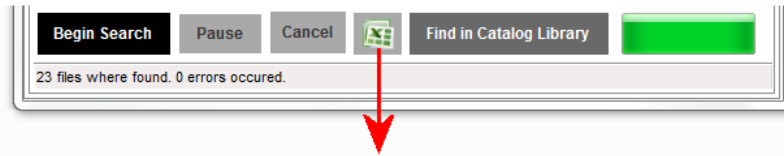


3. Navigate back to the '**Files Found**' tab and select the button at the bottom of the interface called **Find in Catalog Library** to match the results found from entries within the selected catalog libraries.



Even though you can execute this matching application from the Search Criteria tab – viewing the subsequent results is better viewed from within the Files Found tab.

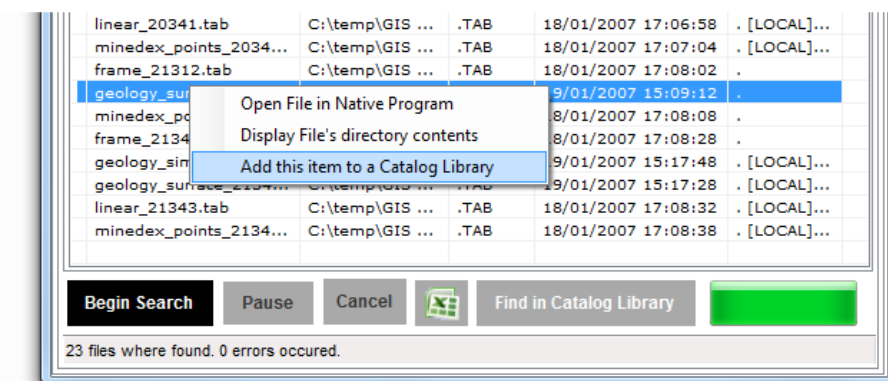
4. If a file is found within a catalog library, the name of the catalog is displayed within the column named **Found In**. Multiple catalog library names can be displayed within this column.
5. For ease of viewing, results can be exported and displayed within Microsoft Excel.



File Name	File Path	File Ext.	Modified Date	Found In
frame_20324.tab	C:\temp\GIS Test Datasets\GWSA Geology\M\Mandurah	.TAB	18/01/2007 17:05	[LOCAL] : Testing Catalog for version Control
geology_surface_20324.tab	C:\temp\GIS Test Datasets\GWSA Geology\M\Mandurah	.TAB	19/01/2007 14:59	[LOCAL] : Testing Catalog for version Control
linear_20324.tab	C:\temp\GIS Test Datasets\GWSA Geology\M\Mandurah	.TAB	18/01/2007 17:05	[LOCAL] : Testing Catalog for version Control
minedex_points_20324.tab	C:\temp\GIS Test Datasets\GWSA Geology\M\Mandurah	.TAB	18/01/2007 17:05	[LOCAL] : Testing Catalog for version Control
quarry_20324.tab	C:\temp\GIS Test Datasets\GWSA Geology\M\Mandurah	.TAB	18/01/2007 17:05	[LOCAL] : Testing Catalog for version Control
frame_20353.tab	C:\temp\GIS Test Datasets\GWSA Geology\M\Moore River	.TAB	18/01/2007 17:07	[LOCAL] : Testing Catalog for version Control
geology_surface_20353.tab	C:\temp\GIS Test Datasets\GWSA Geology\M\Moore River	.TAB	19/01/2007 15:07	[LOCAL] : Testing Catalog for version Control
linear_20353.tab	C:\temp\GIS Test Datasets\GWSA Geology\M\Moore River	.TAB	18/01/2007 17:07	[LOCAL] : Testing Catalog for version Control
minedex_points_20353.tab	C:\temp\GIS Test Datasets\GWSA Geology\M\Moore River	.TAB	18/01/2007 17:07	[LOCAL] : Testing Catalog for version Control
quarry_20353.tab	C:\temp\GIS Test Datasets\GWSA Geology\M\Moore River	.TAB	18/01/2007 17:08	[LOCAL] : Testing Catalog for version Control

6. From the File Found tab, individual search returned records can be selected to display the following options (via menu selections);

- Open the file in its native associated program for display,
- Display the file directory location through Windows Explorer,
- Display the file within the in-built GIS Viewer (\* if file is compatible within displaying spatially),
- Add the file to a Catalog Library – refer to support document *KB3004: How to Add Files to a MAAD2gO Catalog Library* for more information.



This functionality to display a results option is on a per selection mouse click only. Once the options menu has been dismissed or hidden, to redisplay the required options you must select another record (dismiss option menu) then reselect the required record.