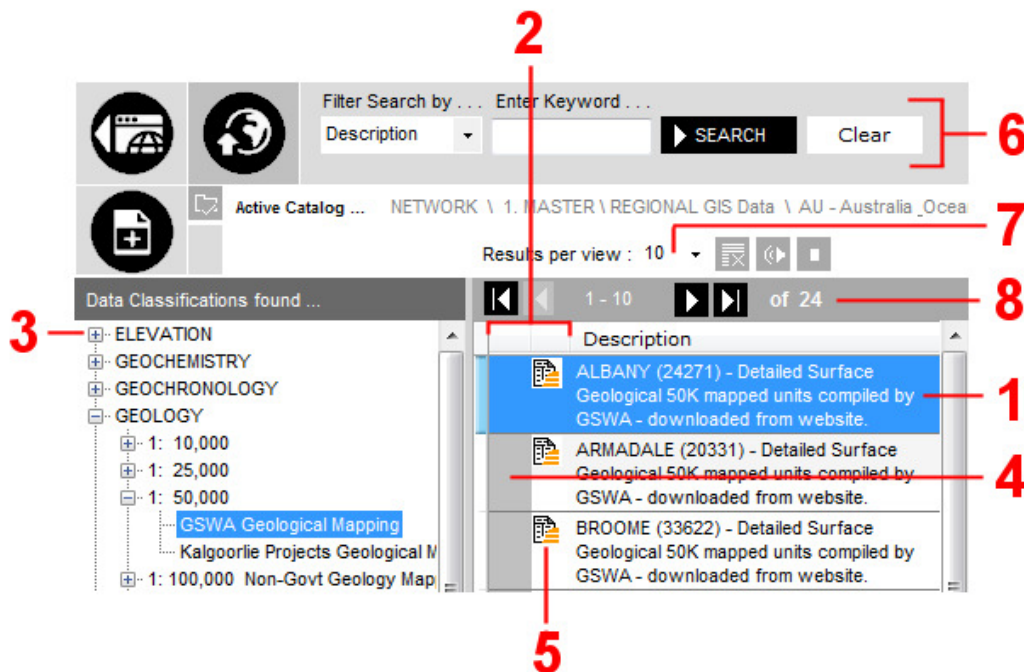


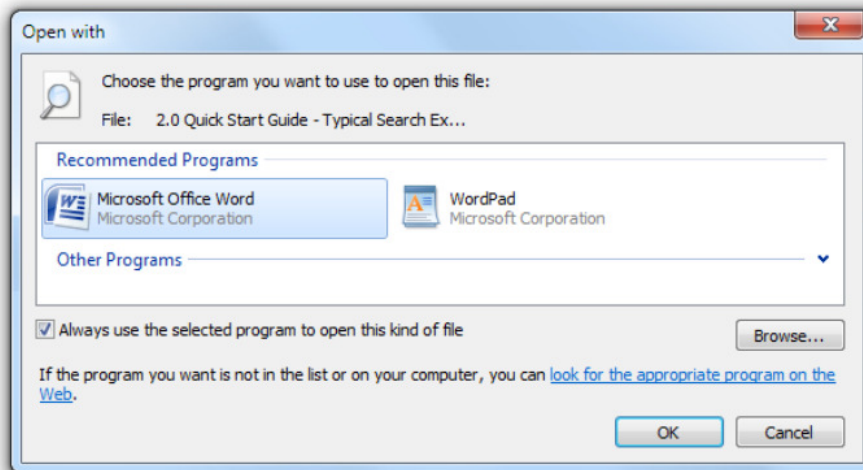
## KB2002: Components of the Catalog Search Results Interface.

*This document outlines the components found within the catalog search selection results interface after a catalog search is performed and the results are displayed.*



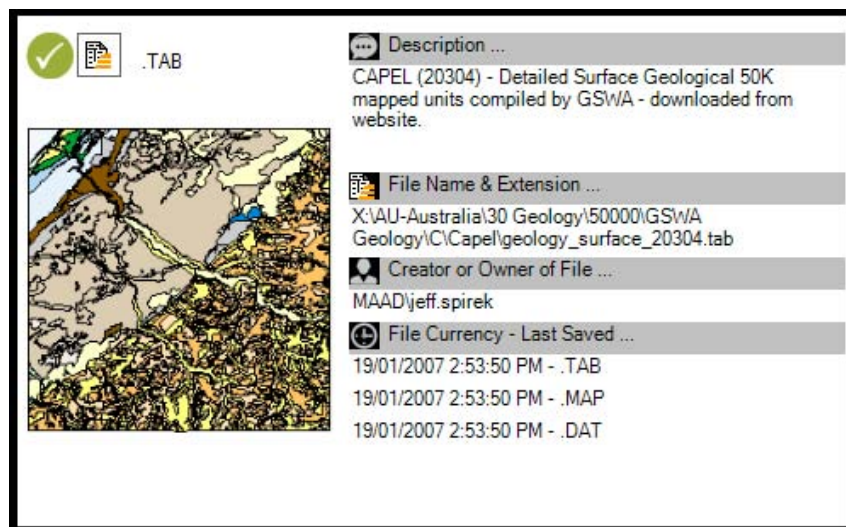
1. The Description field of the catalog's record. **Double click** on this field will result in MAAD2gO attempting to open the **associated file reference** with the catalog record into its **native program as it is associated on the clients computer** ( i.e a .doc file should open in Microsoft Word, a .TAB file will open in MapInfo Professional, etc).

These file extensions associations are managed by the clients computer and can be changed as required if they don't appear to be opening in the correct program. To change, right mouse click on the required file to open through the file explorer, and select open with, and select the option to open with default program. Choose the required program to open the file in, and ensure the tick box to 'Always use the selected program to open this kind of file' is selected.



2. When the mouse is rolled over any of the 2 fields associated with a results record, a **popup preview window of the record is displayed**. Contained within the popup preview is a small graphical image of the layer, the description, file path \ name & extension, the original creator (displayed as their Windows login) of the file, the last saved file date\time stamp, and an icon showing if the file exists or not.

A single click on any of these columns will result in the records Metadata popup window to be displayed.

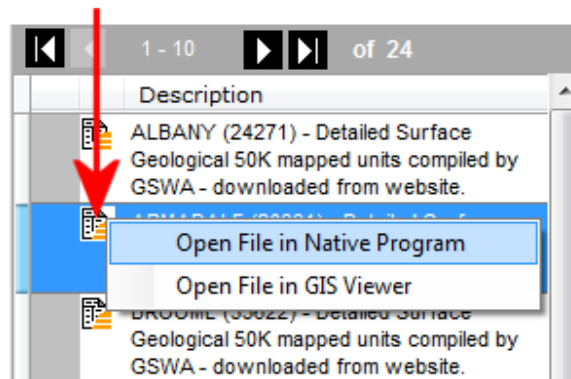


Some information within the popup preview window is not displayed if the file does not exist at its storage location.

3. The **data grouping and classification** tree of the results returned. This tree is used to classify files into easily recognizable groups for easy identification when querying returned catalog search results. Expand or collapse nodes of the tree to show or hide results.
4. The popup preview column. This column displays a popup preview of the catalog record when the mouse cursor is rolled over the 'silver' portion of this column. An image of the file (1<sup>st</sup> page if the file is a multi-paged document) is displayed along with the description, file path and file information. Then a single click on this column will display the Metadata popup panel to the left of the Catalog Search Interface.

- File extension graphical display column displays a recognizable image icon of the file. Single click on this column will display the File Opening Option toolstrip panel.

The main option 'Open File in Native Program' displays the file within the program the file extension is associated with within the operating system.



Rolling the mouse off the toolstrip menu will automatically hide the menu choices. To display the menu again, click the file extension icon again.

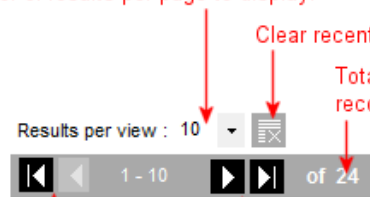
Note: Only spatial files can be opened into the GIS Viewer, and the GIS Viewer interface must be open and active for a file to display.

- Keyword filter controls.** Functionality contained here provides the ability to set the search criteria based on a metadata record field. This option is described in fully in another KB article.
- Functionality to change the **numbers of results per page view found**. The smaller the number of results per view selected from the dropdown list, results in a faster performance to return and display these records.
- Results paging controls.** Functionality provided shows the total number of records found, the records currently being displayed, and controls to navigate through the results paged views. This functionality is expanded upon in KB2007.

Change number of results per page to display.

Clear recently opened files.

Total number of records found.



Result paging buttons